



**CCELL<sup>®</sup>**

# **Technical Specification Sheets**

CCELL Disposables



# Technical Specifications

|         |                   |         |              |          |
|---------|-------------------|---------|--------------|----------|
| Product | Voca              | Version | V1.3         | Page 1/5 |
| SKU     | DS5705-U/DS5710-U | Date    | Feb 28, 2024 |          |

**DISPOSABLE**



## Features

- CCELL ceramic heating tech
- Top filling and capping
- Type-C charging
- 2.6mm aperture\*2
- Available in 0.5/1.0ml

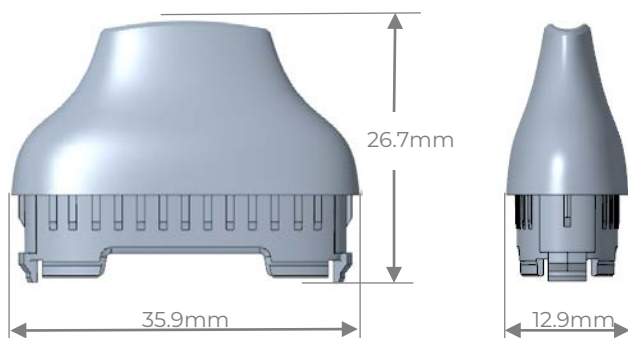
|                         | DS5705-U/DS5710-U |        |
|-------------------------|-------------------|--------|
| Gross volume            | 0.53ml            | 1.05ml |
| Max. fill volume        | 0.5ml             | 1.0ml  |
| Weight (w/o mouthpiece) | Approx. 24.7g     |        |
| Battery capacity        | 280mAh            |        |
| Charging time           | Approx. 1.5 hour  |        |
| Power input             | 5V 1A             |        |
| Output voltage          | 3.4V              |        |
| Standard power          | 8W                |        |
| Charging port           | Type-C            |        |

# Technical Specification Sheet

|         |                   |         |              |          |
|---------|-------------------|---------|--------------|----------|
| Product | Voca              | Version | V1.3         | Page 2/5 |
| SKU     | DS5705-U/DS5710-U | Date    | Feb 28, 2024 |          |

|                       |  |
|-----------------------|--|
| Resistance            | 1.5Ω   |
| Aperture size         | φ2.6mm   |
| Aperture qty.         | 2  |
| Viscosity range       | 1,000-1,000,000 cps  |
| LED light indications | <p><b>Color:</b> White (customizable)</p> <p><b>Charging:</b> LED light remains on</p> <p><b>Charger unplugged:</b> LED light flashes 3 times</p>  |
| Safety features       | <p><b>Short-circuit protection:</b> When the load resistance drops lower than 0.2Ω, the device will not activate, and the LED light will be turned off after staying on for 2 seconds.</p> <p><b>Low voltage protection:</b> When the output voltage of the battery drops lower than 3.2V, the device will not activate, and the LED light will be turned off after flashing 10 times.</p> <p><b>Over-inhale protection:</b> In the case of inhaling over 10 seconds, the device will not activate, and the LED light will be turned off after flashing twice.</p> <p><b>Battery life:</b> 10 charge cycles</p> <p>*Charging via a fast charger (output &gt;5V) may damage the device.</p> |

## MOUHPICE

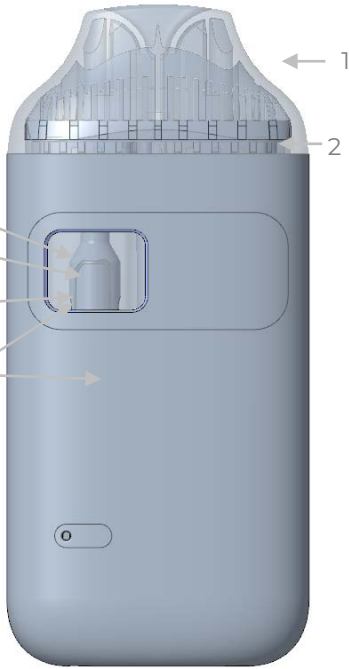


|               |  |
|---------------|--|
| Material      | Plastic  |
| Finish        | Gloss, Matte                                   |
| Color         | Customizable                                   |
| Capping force | 100-200 N                                      |
| Weight        | DS5705-U Approx. 4.1g<br>DS5710-U Approx. 3.7g |
| How to cap    | Capping machine                                |

# Technical Specification Sheet

|         |                   |         |              |          |
|---------|-------------------|---------|--------------|----------|
| Product | Voca              | Version | V1.3         | Page 3/5 |
| SKU     | DS5705-U/DS5710-U | Date    | Feb 28, 2024 |          |

## MATERIALS



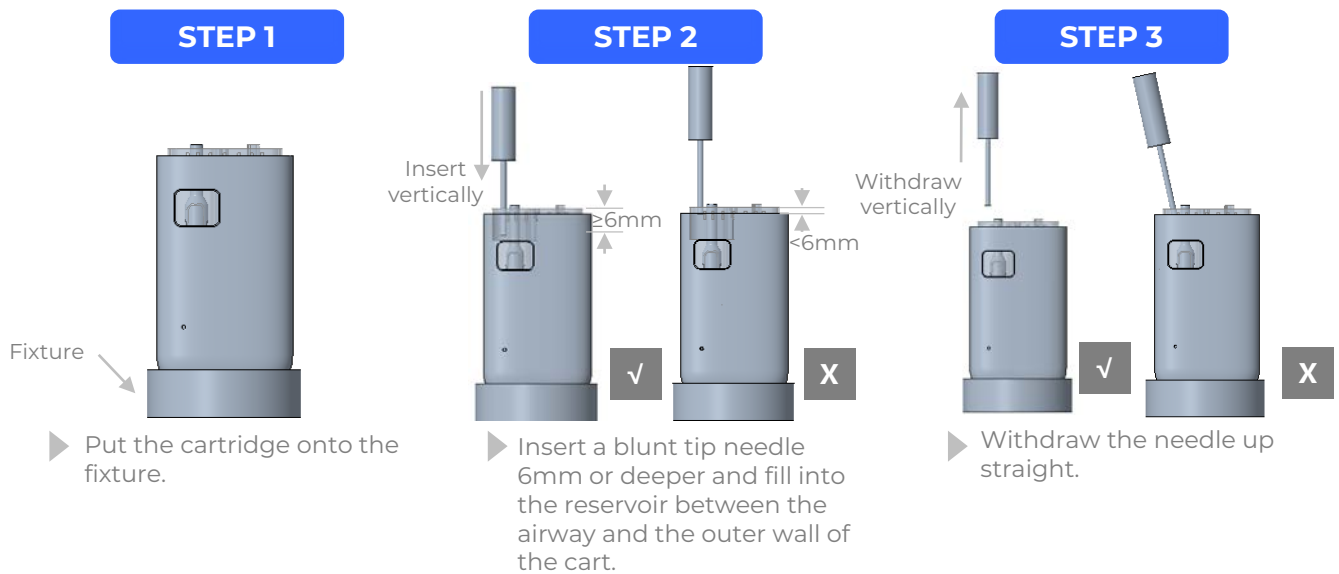
| Parts               | Materials       | OEM                                |
|---------------------|-----------------|------------------------------------|
| ① Mouthpiece        | Plastic         | Color                              |
| ② Mouthpiece gasket | Silicone        | /                                  |
| ③ Liquid reservoir  | Plastic         | /                                  |
| ④ Center post       | Stainless steel | /                                  |
| ⑤ Atomizer wrap     | Nonwoven fabric | /                                  |
| ⑥ Atomizer          | Ceramic         | Aperture size: $\varnothing$ 2.6mm |
| ⑦ Battery case      | Plastic         | Stickers, silkscreen               |

## PACKAGING

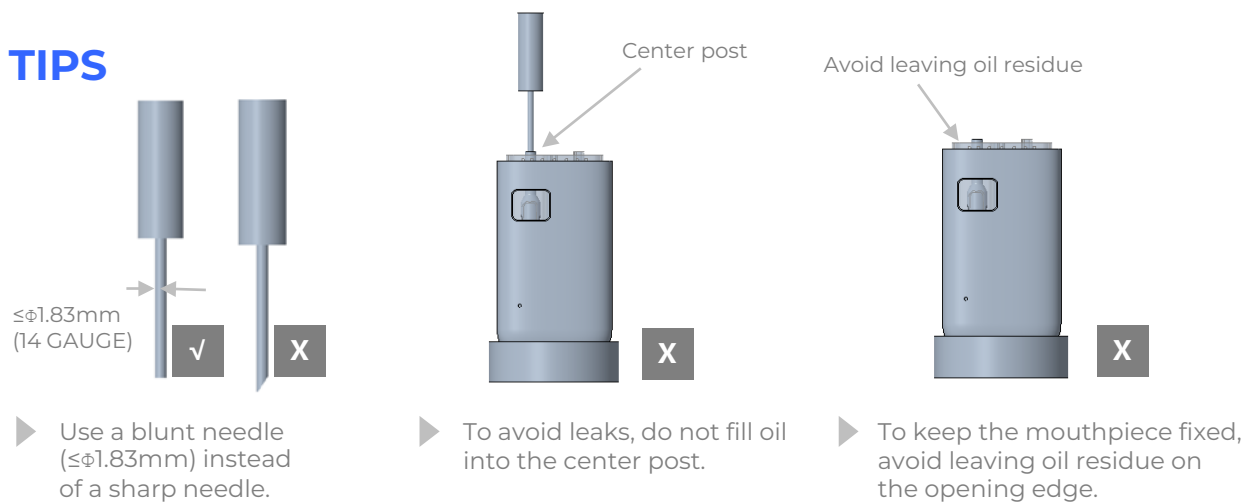
| Packaging |  |  | Carton Measurement   |
|-----------|--|--|--|
| Foam      |  |  | <b>Dimensions:</b><br>445*305*260mm<br><br><b>Gross weight:</b><br>5.7kg<br><br><b>Quantity:</b><br>200pcs |

|         |                   |         |              |          |
|---------|-------------------|---------|--------------|----------|
| Product | Voca              | Version | V1.3         | Page 4/5 |
| SKU     | DS5705-U/DS5710-U | Date    | Feb 28, 2024 |          |

## FILLING INSTRUCTIONS



## TIPS



## CAUTION

- The oil temperature for filling should fall between **90°F to 130°F (32°C to 55°C)**.
- To avoid leaks, the fill amount shall not exceed the maximum amount.
- Before batch filling, check to make sure the carts' aperture size is compatible with the oil.  
We recommend using **φ2.6mm for viscous oil**.



# Shipping and Storage Conditions

# Shipping and Storage Conditions

## ● Shipping Conditions

- **Environment:** The means of transport must be clean and hygienic, and the devices should be handled with care and stacked according to maximum stacking rules. Do not mix with toxic or odorous items during transportation. The devices should be protected from rain, moisture, sun exposure, and severe vibration or rough handling during transportation.
- **Temperature:** 73±9°F (23±5°C)
- **Relative humidity:** 35%-70%

\*In case of filled devices to be transported across geographically different regions, it's recommended to: (a) Keep the filled devices horizontally; (b) Use sealed packaging, such as capsule or candy packaging; (c) Ensure the atmospheric pressure during transportation is between 86-106kpa.

## ● Storage Conditions

- **Environment:** The devices should be stored in a room that is dry, ventilated, clean, free of odors and particulates, and protected from light, and should not be mixed with toxic, harmful or corrosive substances.
- **Temperature:** 73±9°F (23±5°C)
- **Relative humidity:** 35-70%
- **Shelf life:** The shelf life of unfilled devices is one year and that of non-rechargeable devices is six months. Do not use after one year unless they are retested perfect in overall functionality and flavor delivery. To store filled devices for a long time, make sure to: (a) Keep the filled devices horizontally; (b) Use sealed packaging, such as capsule or candy packaging.



# Product Caution

## Product Caution

- Failure to follow the following safety instructions during use may cause the device to overheat and may result in fire, electric shock, injury, and property damage. Please read and follow all safety instructions below. The following warning is based on UL1642 "Safety Standard (Lithium Battery)" GB 31242-2014 "Safety Requirements for Lithium-Ion Cells and Battery Packs for Portable Electronic Products".
- To ensure charging safety, it is prohibited to use a three-in-one fast charging cable to charge mobile phones (or other fast charging devices) and atomization products at the same time;
- It is recommended to use 5V 1A adapter. Using power supplies and chargers with other specifications may cause fire and other dangers.
- Using damaged cables or chargers, or charging in humid environments may cause fire, electric shock, injury, or damage to the product or other property. During use or charging, please place the product, charging cable, and power adapter in a well-ventilated area.
- When charging is complete or not charging, please disconnect the charger from the device and unplug the charger from the power socket.
- Keep the product out of the reach of children.
- Do not try to insert foreign objects into the product or carry small metal objects together to prevent short circuits caused by external contacts.
- Do not disassemble, squeeze, open, or puncture the device.

## Product Caution

- Do not beat, throw, step on the product or subject it to severe physical impact
- If the product falls or hits a hard surface, it may damage the device and its battery. If you suspect damage to your device, especially physical damage, deformation, swelling, or leakage, please stop using it immediately and contact our customer service.
- Do not immerse the product in water or other liquids, or expose the product to fire, explosion or other hazardous environments.
- Do not place the product close to heat sources, sunlight or high temperature environments (above 60C). Exposure to high temperatures may damage the battery, causing malfunction and possibly resulting in fire, explosion, or release of hazardous materials. Lithium batteries can burn/explode if heated or incinerated.
- Lithium-ion batteries contain corrosive and toxic compounds. If product is physically damaged or punctured, avoid contact with skin and eyes and dispose of immediately. If your eyes or skin come into contact with the contents of the battery, rinse the affected area with water and seek medical attention immediately.
- It is recommended that you charge the battery at least once every six months. If the device is not used for a long period of time, the battery capacity may decrease.

**CCELL<sup>®</sup>**

[www.ccell.com](http://www.ccell.com)